

# Motorino

## Motorcontrol for Arduino

### Description

The Motorino board is an extension-board to control and use up to 16 PWM-controlled 5V-Servo-motors.

The included clock generator ensures a very precise PWM signal and a very precise positioning.

The board has 2 inputs for voltage from 4.8V to 6V which can be used for up to 11A.

With this input, a perfect power supply is always guaranteed and even bigger projects are no problem.

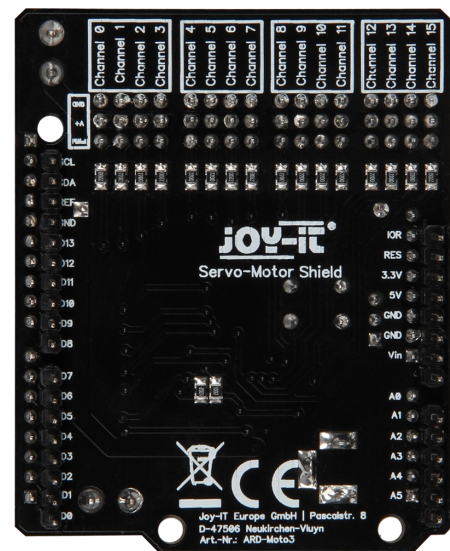
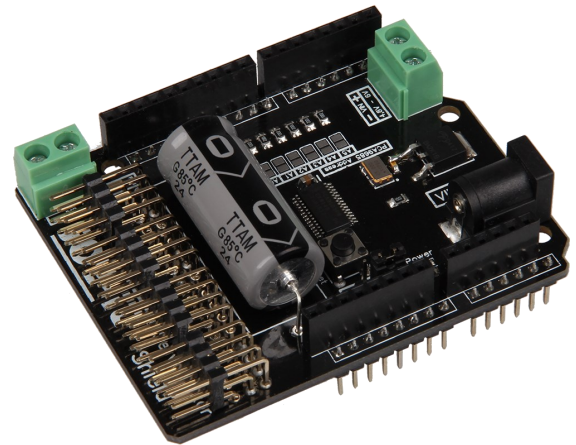
The supply runs directly over the Motorino which provides a connection for voltage, ground and control.

With the build in capacitor, the voltage is buffered which prevents a sudden voltage-drop at a high load.

But there is also the possibility to connect another capacitor.

The control and the programing can be done, as usual, with the Arduino.

Manuals and code examples allows a quick introduction for beginners.



### Technical specification:

<b>Model</b>	Motorino
<b>Article number</b>	ARD-Moto3
<b>Special features</b>	16 Channels , own clock generator
<b>Input 1</b>	Coaxial power connector 5.5 / 2.1 mm , 4,8-6 V 5A max
<b>Input 2</b>	Screw-terminal, 4,8-6 V 6A max
<b>Communication</b>	16 x PWM
<b>Compatible with</b>	Arduino Uno, Mega and may more microcontroller with Arduino compatible pinout
<b>Dimensions</b>	69 x 24 x 56 mm
<b>Scope of supply</b>	Board, Manual, Retail package
<b>EAN</b>	4250236814742